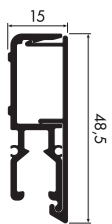


**newly**<sup>n</sup>  
CONNECTING ART



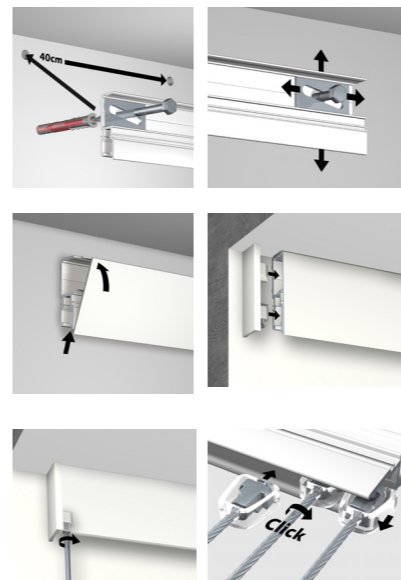
**n R70 MUSEUM LINE**

R70



### MUSEUM

- 1 Professional wall rail
- 2 Easy mounting flush against wall or ceiling
- 3 Easy adjustment to achieve level hanging using a mounting plate
- 4 Click the cover over the rail
- 5 End cap screwed in
- 6 Suitable for all Newly 2-mm hanging wires
- 7 Max. weight capacity 70 kg per meter



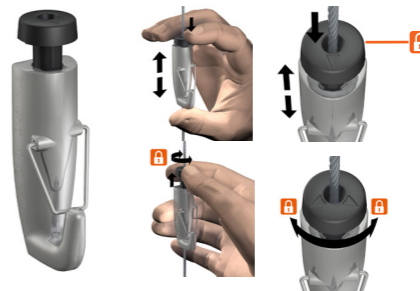
### 2.5 - MM STEEL CABLE TWISTER LOCK

- 1 2.5- mm steel cable
- 2 Twister lock for secure and reliable attachment of the wire in the rail



### H70 AUTOGRIP LOCK HOOK

- 1 Designed specifically for hanging heavy works of art
- 2 Hook can only be used with the 2.5-mm steel cable Twister Lock
- 3 Equipped with safety and auto lock function



### R70 RAIL IS COMPATIBLE WITH

- 1 All 2-mm steel and perlon hanging wires and rods
- 2 Ideal for hanging smaller or lighter pieces of art
- 3 Use the H100 hook in combination with the 2-mm hanging wires





[www.newlypicturehangingsystems.com](http://www.newlypicturehangingsystems.com)

**newly**<sup>n</sup>  
CONNECTING ART

POWERED BY ARTITEQ

27/60